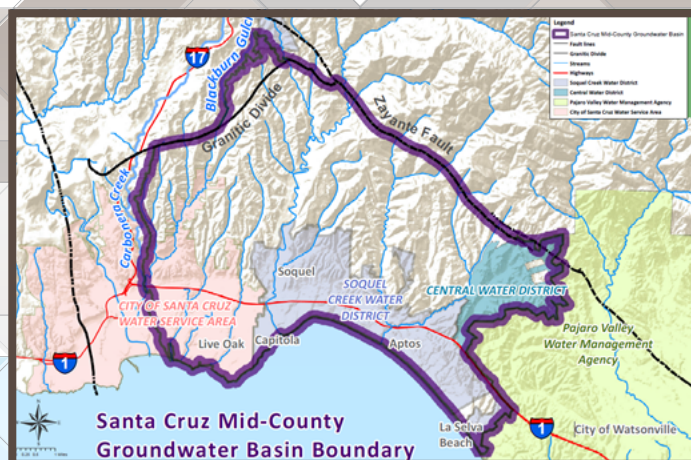


# GROUNDWATER SUSTAINABILITY PLAN ADVISORY COMMITTEE



## Develop a Sustainable Groundwater Plan

### Advise on • Sustainability Goals • Project Funding • Plan Implementation

The Santa Cruz Mid-County Groundwater Agency (MGA) oversees groundwater management in the Santa Cruz Mid-County Groundwater Basin. The MGA is a collaboration of local agencies, water districts, and private well owners created in response to California's Sustainable Groundwater Management Act.

The MGA is looking for volunteers to serve on its Groundwater Sustainability Plan Advisory Committee. The Advisory Committee will make groundwater sustainability recommendations to the MGA Board, review technical information, advise on Basin sustainability goals, project funding, plan implementation guidance, and other topics identified by the Committee and the MGA Board. The time commitment will vary but is expected to take 10 hours per month from September 2017 through July 2019.


A public meeting will be held on June 29, 2017 from 7-9 PM at the Congregational Church of Soquel at 4951 Soquel Dr., Soquel CA 95073 to provide the public with more information about the MGA and the role of the Advisory Committee.

### MGA Basin residents may apply for Advisory Committee positions from June 1 – July 20, 2017.

To verify that you live within the MGA Basin, please check our interactive map at <http://www.midcountygroundwater.org/mid-county-basin-area/interactive-map>.

California's Sustainable Groundwater Management Act became law on January 1, 2015. The MGA Basin is high priority and in critical overdraft. The MGA must complete its Groundwater Sustainability Plan by 2020 and permanently avoid the undesirable impacts of groundwater overdraft by 2040.

Please direct completed applications and questions to Darcelle Pruitt, Senior Planner for the Santa Cruz Mid-County Groundwater Agency at:

 831-662-2052

 [dpruitt@cfsc.org](mailto:dpruitt@cfsc.org)

 [midcountygroundwater.org](http://midcountygroundwater.org)