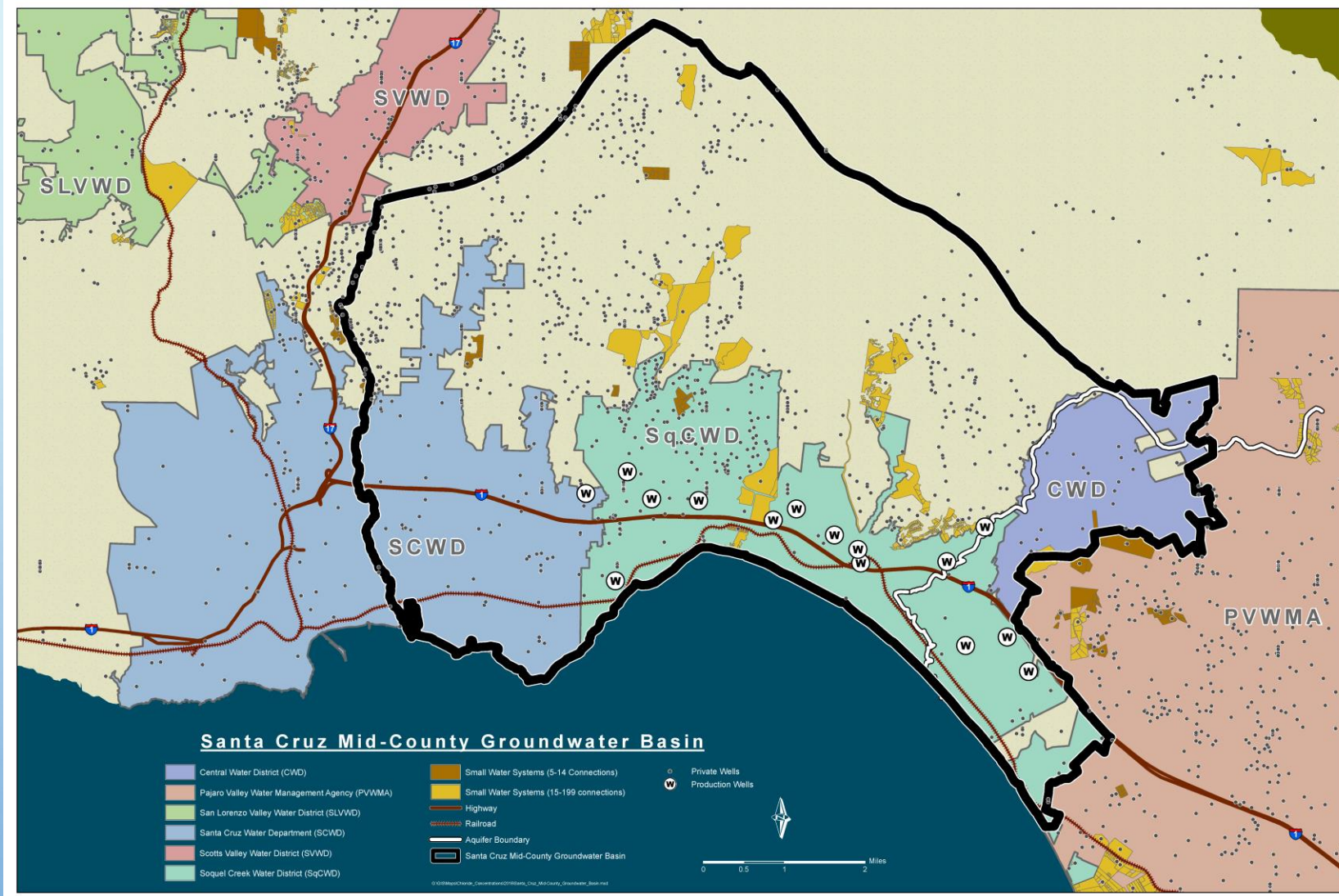


The background is a light blue gradient with several realistic water droplets of various sizes scattered across it. The droplets have highlights and shadows, giving them a three-dimensional appearance.

Sustainable Groundwater Management Act (SGMA)

The Legal Context

Santa Cruz Mid-County Groundwater Basin



Sustainable Groundwater Management Act Purpose

- Water is a vital resource. Most of the water we use in the Mid-County Basin is groundwater.
- The purpose of the Sustainable Groundwater Management Act (SGMA) is to avoid “undesirable results” to our groundwater basins.
- A Groundwater Sustainability Plan is required for our Basin and is the most important tool mandated by SGMA. It encourages the local community to decide how to reach the State’s groundwater sustainability goals.
- It is in our best interest to work together to protect our shared groundwater resources.

Avoid Undesirable Results



SGMA's Legal Purpose

- **Avoid Undesirable Results:**
 - Chronic Groundwater Overdraft
 - Reduction In Groundwater Storage
 - Seawater Intrusion
 - Degraded Water Quality
 - Land Subsidence
 - Surface Water Depletions Impacts on Human & Ecological Uses

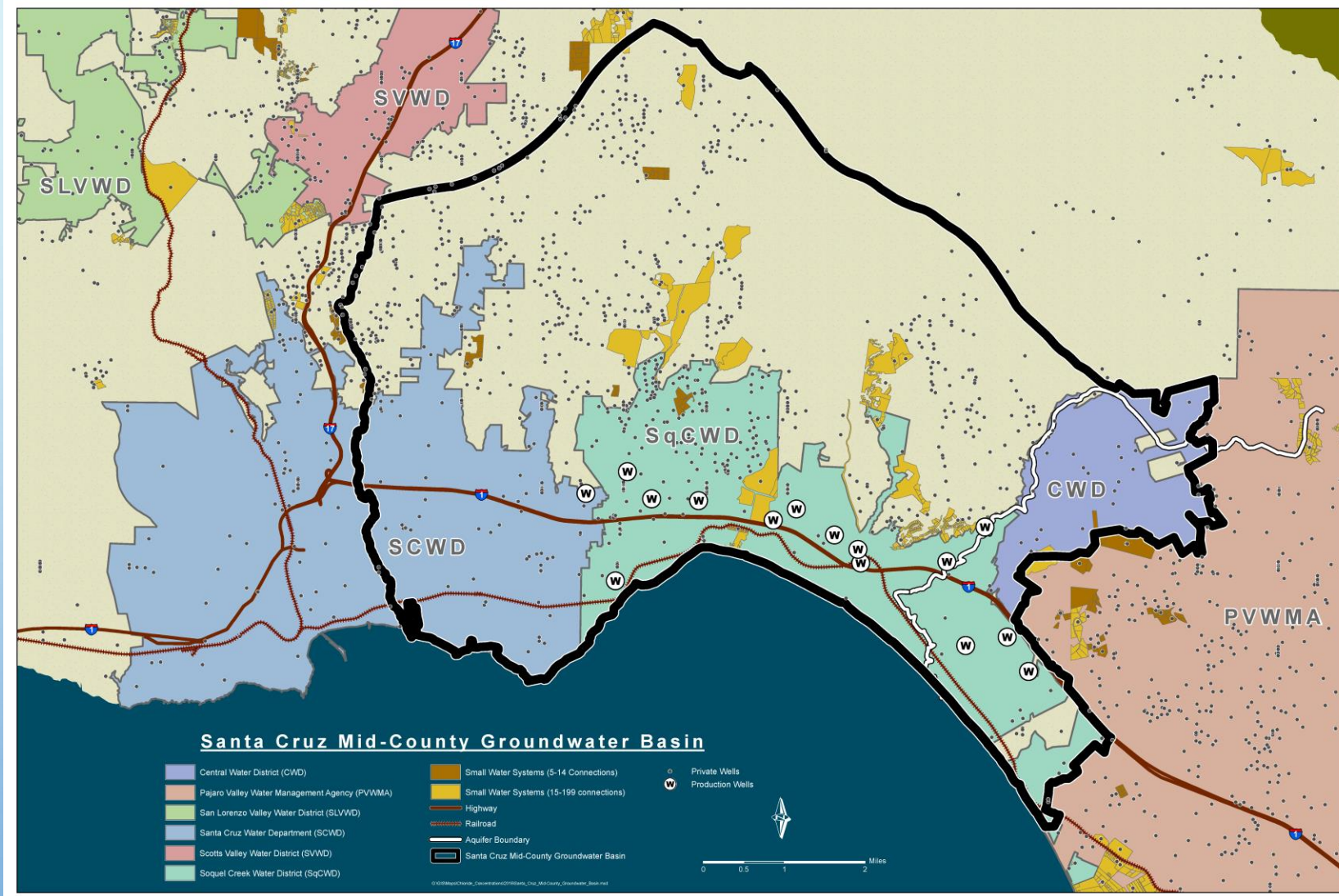
California's Traditional Legal Framework

- Traditionally, California law does not regulate groundwater separately from landowner's surface property rights
 - Legal Rule - groundwater use is 'proportional' to overlying surface rights
 - Tragedy of the Commons – what is 'proportional' groundwater use?
 - Hard to manage a resource you can't see
 - Geology and hydrology vary place to place
 - Local variances impact groundwater storage and recharge

Framework Created By New SGMA Laws

- SGMA Sets Goals / Encourages Collaboration / Provides Tools
 - Goal - Sustainable Management of groundwater basins by 2040
- Our Basin's boundary extends over 3 water management agencies and privately owned wells
 - Collaborative process
 - Make Basin management decisions
 - Mediate differences between groundwater users
 - Fund planning and implementation of gsp
 - Tools to manage Basin – agencies and private well owners are already working together
 - Groundwater Sustainability Agency – Santa Cruz Mid-County Groundwater Agency (MGA) established in march 2016
 - GSA powers available to MGA

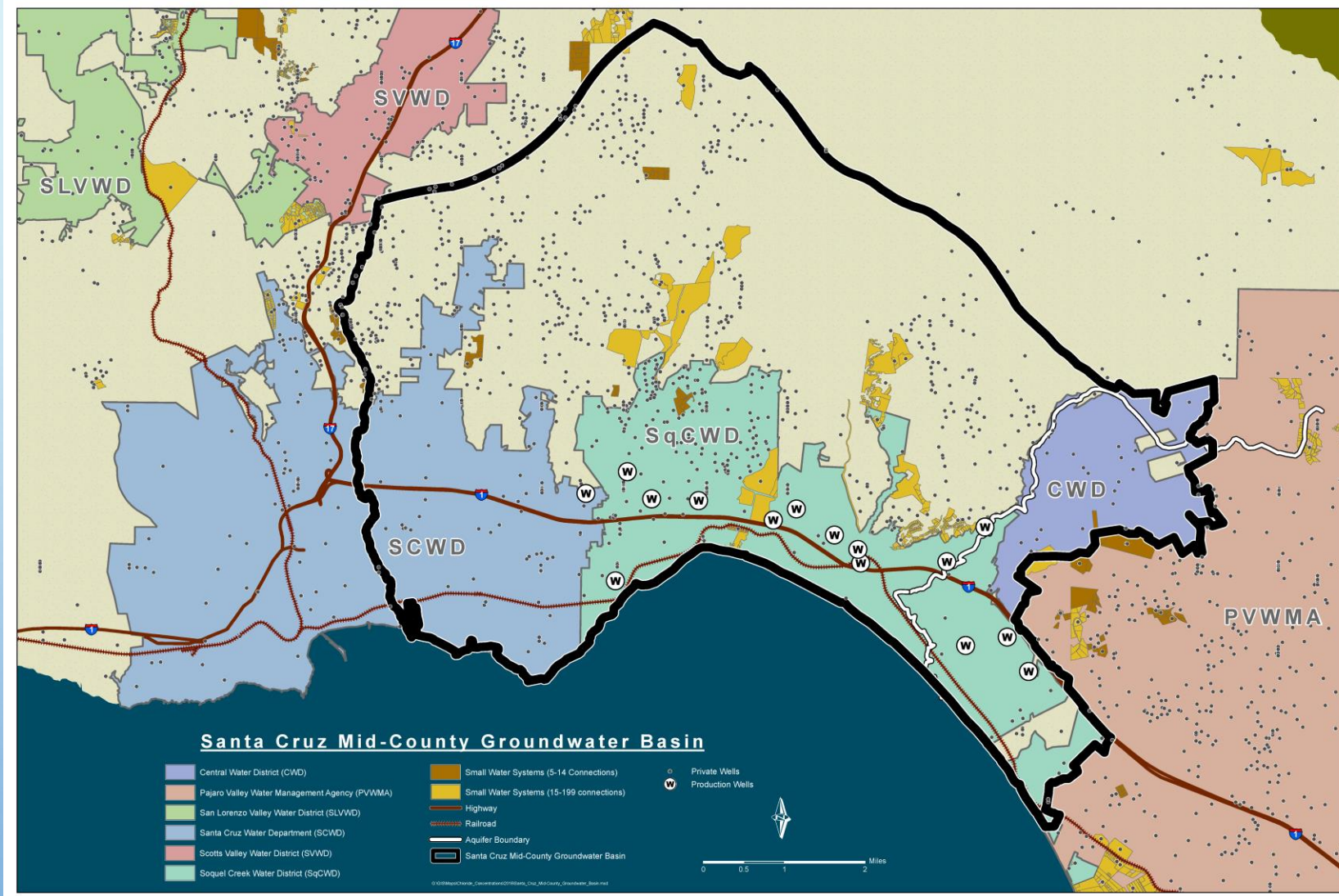
Santa Cruz Mid-County Groundwater Basin



Mid-County Groundwater Agency and Our Vital Groundwater Resource

- SGMA grants powers to the MGA
 - Adopt rules, regulations, ordinances and resolutions
 - Investigate water rights
 - Require well registration, extraction reports and storage diversions
 - Acquire property and water rights
 - Reclaim water
 - Impose fees
 - Conduct enforcement actions for failure to comply
- Participation in the MGA planning process allows Basin water users to shape our destiny within the State's groundwater mandate.

Santa Cruz Mid-County Groundwater Basin



TIMELINE FOR SUSTAINABILITY

June
30,
2017

Local groundwater sustainability agencies formed.

Jan.
31,
2020

Groundwater sustainability plans adopted for critically overdrafted basins.

Jan.
31,
2022

Groundwater sustainability plans adopted for high and medium priority basins not currently in overdraft.

By
2040

All high and medium priority groundwater basins must achieve sustainability.

SGMA Sustainability Timeline

Groundwater Sustainability

- We have already formed our GSA, so we are a little ahead of the State's mandated schedule.
- There is more to do in the planning process
- Water is life
- In the Mid-County Basin our water is groundwater
- It is in our best interest to work together to protect our shared groundwater resource.